



Manufacturer of Hairpieces & Wigs

Custom-Made ♦ Stock ♦ Repair

# About Us

“Suncrest II represents over 40 years of ‘Hands on’ experience in supplying every style of Custom Made and Stock Men’s and Ladies Wigs.”

Suncrest II has always been associated with quality hair replacement services. We are a focused distributor and working on providing the highest quality products in the Hair Replacement Industry. The Team behind Suncrest II have a thorough knowledge of “your” needs as well as the customers’ needs and expectations from the product. We guarantee to provide the absolute finest quality products at the lowest possible prices.

Standard Guarantee (6 Month Warranty): against manufacturing defects Excluding Permanent Wear Units. Permanent wear units have a 6 month Foundation Warranty but, we are reasonable. If something happens quickly we will consider it favorably... \*Disposable units are not included\* (Lace and Skin Foundations)

Optional Risk Free Guarantee (\$75.00 additional): We will guarantee that both you and your customer are satisfied with the product. If for any reason you or your client are not satisfied within 35 days of shipping, even if the customer has been wearing the unit, even though it has been cut and styled, return it to us. Ask us to remake it for you or ask for your money back.

No questions asked. No exceptions.

Stock Products: May be returned for credit, exchange or refund as long they are not altered in any manner and can be returned to our stock inventory within 30 days. There is a \$10.00 restocking fee.

SUNCREST II & RALPH

[WWW.SUNCRESTII.COM](http://WWW.SUNCRESTII.COM)

APRIL 2023

# The All Pro®

Undervented Folded Dura Lace Front  
Available in tangle-free Human Hair or  
Synthetic Fiber.



## Colors:

52 Standard Tone on Tone

## Fine Welded Mono Lace Front

Size: 7 3/4" x 9 3/4" \*

## Features:

Fine Mono Base vented Free Style with  
an extra T-shaped tape patch at the back.  
1" Polyurethane Front, Sides, and Back.  
Foundation may be cut to many smaller  
sizes. Under Vented Folded Dura Lace  
front edge.



No.59 and 60 available in Synthetic Fiber only. Most Synthetic colors will be special ordered. Afro is available in the All-Pro Human Hair - Color No. 1B and 1B10. All grey in Human Hair units are of Synthetic Fiber so the grey will not take the color when the units need to be re-dyed. All 52 colors are Tone - on - Tone matching the 3-tone color ring. We hand match each unit with Human Hair or Synthetic Fiber According to the color ring specified.

SUNCREST II & RALPH

WWW.SUNCRESTII.COM

APRIL 2023

## Contact Us

888.990.0040

5201 RAVENSWOOD RD #121  
FORT LAUDERDALE, FL 33312

# The All Star®

Fine Welded Mono Lace Front  
Available in tangle-free Human Hair or  
Synthetic Fiber.



## Colors:

52 Standard Tone on Tone

## Fine Welded Mono "Lace" Front

Size: 7 1/2" x 9 3/4\*

## Features:

Fine Welded Mono Front with Fine Mono Base; polyurethane perimeter. Easily altered for a better fit. Single Hair Front Knotting with a Naturally Staggered Front Hairline. May be easily cut to a smaller size.



No.59 and 60 available in Synthetic Fiber only. Most Synthetic colors will be special ordered. Afro is available in the All-Pro Human Hair - Color No. 1B and 1B10. All gray in Human Hair units are of Synthetic Fiber so the gray will not take the color when the units need to be re-dyed. All 52 colors are Tone - on - Tone matching the 3-tone color ring. We hand match each unit with Human Hair or Synthetic Fiber According to the color ring specified.

SUNCREST II & RALPH

WWW.SUNCRESTII.COM

APRIL 2023

## Contact Us

888.990.0040

5201 RAVENSWOOD RD #121  
FORT LAUDERDALE, FL 33312

# The Skin Graft®

Available in tangle-free Human Hair or Synthetic Fiber.



## Colors:

52 Standard Tone on Tone

## Fine Welded Mono Lace Front

Size: 7 <sup>3</sup>/<sub>4</sub>" × 9 <sup>3</sup>/<sub>4</sub>"

## Features:

½" Crystal Clear Front with Breathable Polyurethane and Glass Gauze foundation for stability. Light Variegate Vented Single Hair. Broadly Injected Natural Stand Up Loop knotting. Easily cut to any smaller size.



No.59 and 60 available in Synthetic Fiber only. Most Synthetic colors will be special ordered. Afro is available in the All-Pro Human Hair - Color No. 1B and 1B10. All grey in Human Hair units are of Synthetic Fiber so the grey will not take the color when the units need to be re-dyed. All 52 colors are Tone - on - Tone matching the 3-tone color ring. We hand match each unit with Human Hair or Synthetic Fiber According to the color ring specified.

SUNCREST II & RALPH

WWW.SUNCRESTII.COM

APRIL 2023

## Contact Us

888.990.0040

5201 RAVENSWOOD RD #121  
FORT LAUDERDALE, FL 33312

# The Bachelor®

Available in tangle-free Human Hair or Synthetic Fiber.

## Colors:

52 Standard Tone on Tone

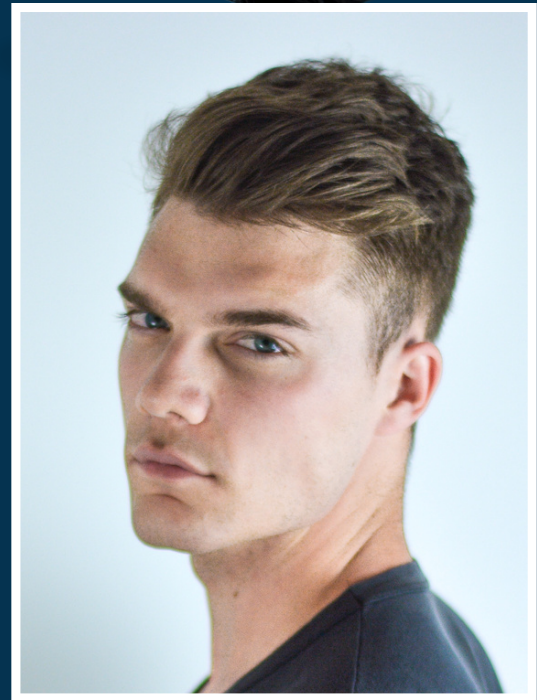
## Hair Length:

Front +Top 3" or 3 ½". Sides +Back 4"

Size: 7 ¾" × 9 ¾"

## Features:

Thin Clear PU with small, scalloped front. PU + Base Sides & Back. Just like "The Gary" model. Foundation can be cut down to many sizes. Vented with light wave hair, light density, pre-cut and pre-styled with a left indefinite break, ready to wear.



No.59 and 60 available in Synthetic Fiber only. Most Synthetic colors will be special ordered. Afro is available in the All-Pro Human Hair - Color No. 1B and 1B10. All grey in Human Hair units are of Synthetic Fiber so the grey will not take the color when the units need to be re-dyed. All 52 colors are Tone - on - Tone matching the 3-tone color ring. We hand match each unit with Human Hair or Synthetic Fiber According to the color ring specified.

SUNCREST II & RALPH

WWW.SUNCRESTII.COM

APRIL 2023

## Contact Us

888.990.0040

5201 RAVENSWOOD RD #121  
FORT LAUDERDALE, FL 33312

# The Gary®

Available in tangle-free Human Hair or Synthetic Fiber.



## Colors:

52 Standard Tone on Tone

## Clear Scalloped Front

Size: 7 1/2" x 9 3/4" \*

## Features:

Clear PU + Gauze Scalloped Front; Fine Mono Base with Polyurethane cutaway Tape Patch areas. May be easily cut to many sizes.



No.59 and 60 available in Synthetic Fiber only. Most Synthetic colors will be special ordered. Afro is available in the All-Pro Human Hair - Color No. 1B and 1B10. All grey in Human Hair units are of Synthetic Fiber so the grey will not take the color when the units need to be re-dyed. All 52 colors are Tone - on - Tone matching the 3-tone color ring. We hand match each unit with Human Hair or Synthetic Fiber According to the color ring specified.

SUNCREST II & RALPH

WWW.SUNCRESTII.COM

APRIL 2023

## Contact Us

888.990.0040

5201 RAVENSWOOD RD #121  
FORT LAUDERDALE, FL 33312

# The Micro Pro®

Available in tangle-free Human Hair or Synthetic Fiber.



## Colors:

52 Standard Tone on Tone

## Scalloped Front

Size: 7  $\frac{3}{4}$ "  $\times$  9  $\frac{3}{4}$ "

## Features:

Clear PU + Gauze Scalloped front with PU and Glass Silk perimeter. Fine Mono center area. For better fitting, the unit's base may be cut to many sizes including a Rear Partial Unit.



No.59 and 60 available in Synthetic Fiber only. Most Synthetic colors will be special ordered. Afro is available in the All-Pro Human Hair - Color No. 1B and 1B10. All grey in Human Hair units are of Synthetic Fiber so the grey will not take the color when the units need to be re-dyed. All 52 colors are Tone - on - Tone matching the 3-tone color ring. We hand match each unit with Human Hair or Synthetic Fiber According to the color ring specified.

SUNCREST II & RALPH

[WWW.SUNCRESTII.COM](http://WWW.SUNCRESTII.COM)

APRIL 2023

## Contact Us

888.990.0040

5201 RAVENSWOOD RD #121  
FORT LAUDERDALE, FL 33312



# The Lace Graft®

WITH PU

Available in tangle-free Human Hair or Synthetic Fiber.

## Colors:

52 Standard Tone on Tone

## 1/2 Crystal Clear PU Front Scallop

Size: 7 3/4" x 9 3/4"

## Features:

All Star Welded Mono Lace Foundation with Naturally Staggered Front Hairline. Stitched for Durability and Ease of Alteration. Double layers in front for tape patch. Can be with or without PU tape around sides and back. Light Variegate Vented single Hair Half Knot for Most Natural Appearance. Easily cut to a smaller size.



No.59 and 60 available in Synthetic Fiber only. Most Synthetic colors will be special ordered. Afro is available in the All-Pro Human Hair – Color No. 1B and 1B10. All grey in Human Hair units are of Synthetic Fiber so the grey will not take the color when the units need to be re-dyed. All 52 colors are Tone - on - Tone matching the 3-tone color ring. We hand match each unit with Human Hair or Synthetic Fiber According to the color ring specified.

SUNCREST II & RALPH

WWW.SUNCRESTII.COM

APRIL 2023

## Contact Us

888.990.0040

5201 RAVENSWOOD RD #121  
FORT LAUDERDALE, FL 33312

# The Lace Graft®

WITHOUT PU

Available in tangle-free Human Hair  
or Synthetic Fiber.



## Colors:

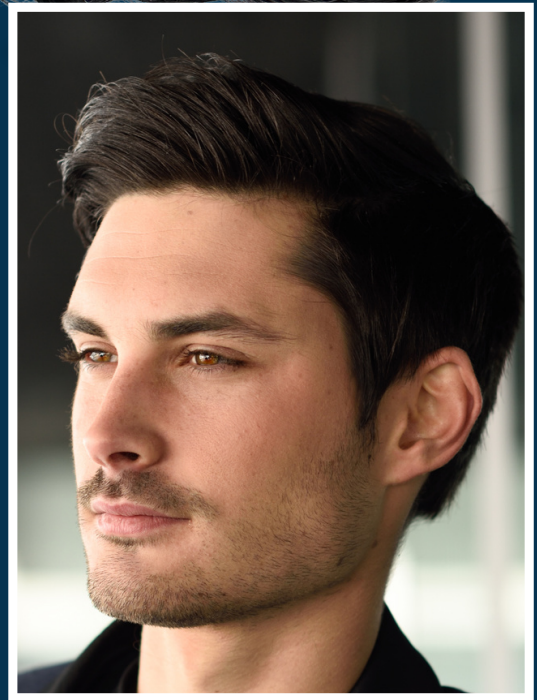
52 Standard Tone on Tone

## Fine Welded Lace

Size: 7 3/4" x 9 3/4"

## Features:

All Star Welded Mono Lace Foundation with Naturally Staggered Front Hairline. Stitched for Durability and Ease of Alteration. Double layers in front for tape patch. Can be with or without PU tape around sides and back. Light Variegate Vented single Hair Half Knot for Most Natural Appearance. Easily cut to a smaller size.



No.59 and 60 available in Synthetic Fiber only. Most Synthetic colors will be special ordered. Afro is available in the All-Pro Human Hair - Color No. 1B and 1B10. All grey in Human Hair units are of Synthetic Fiber so the grey will not take the color when the units need to be re-dyed. All 52 colors are Tone - on - Tone matching the 3-tone color ring. We hand match each unit with Human Hair or Synthetic Fiber According to the color ring specified.

SUNCREST II & RALPH

WWW.SUNCRESTII.COM

APRIL 2023

## Contact Us

888.990.0040

5201 RAVENSWOOD RD #121  
FORT LAUDERDALE, FL 33312

# The Fronier®

Available in tangle-free Human Hair or Synthetic Fiber.

## Colors:

52 Standard Tone on Tone

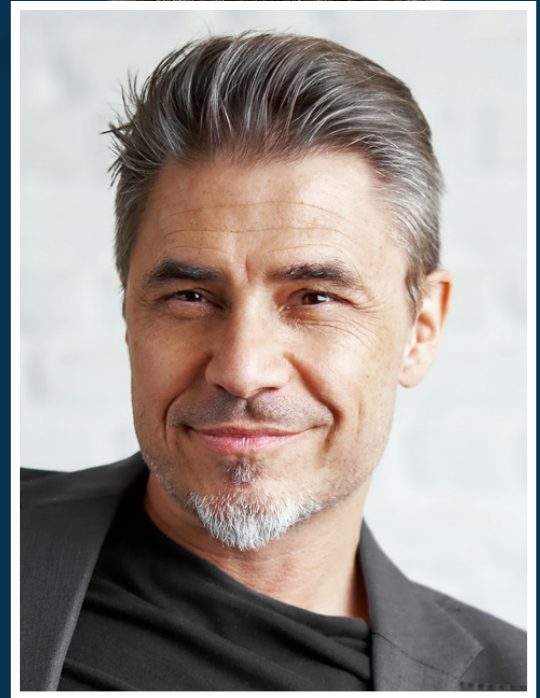
## Hair Length:

Front & Top 3" - 3 ½", Sides & Back 4"

Size: 7 ¾" × 9 ¾"

## Features:

All Star Welded Mono Lace Foundation, with a lace front and PU & Base all around. PU & Base cutaway sides & back. Foundation can be cut down to different sizes. Completely natural staggered front hairline. This unit comes in medium wave hair, light density, Vented Freestyle, is pre-cut and ready to wear.



No.59 and 60 available in Synthetic Fiber only. Most Synthetic colors will be special ordered. Afro is available in the All-Pro Human Hair - Color No. 1B and 1B10. All grey in Human Hair units are of Synthetic Fiber so the grey will not take the color when the units need to be re-dyed. All 52 colors are Tone - on - Tone matching the 3-tone color ring. We hand match each unit with Human Hair or Synthetic Fiber According to the color ring specified.

SUNCREST II & RALPH

WWW.SUNCRESTII.COM

APRIL 2023

## Contact Us

888.990.0040

5201 RAVENSWOOD RD #121  
FORT LAUDERDALE, FL 33312

# Foundation Guide

**We have many different Foundation Materials available. The following are the most popular:**

**Fine Mono:** The most popular foundation used today. Very durable, closely woven Fine Nylon mesh material. Also known as: MMesh, E-3, Soft Fine Mono, Micro Screen, and B-1.

**Super Fine Mono:** Thinner version of Fine Mono. Very natural. Appearing soft and lightweight. Not recommended for permanent wear or very active clients.

**Mono Silk:** Soft fine very closely woven polyester material. Looks like silk. Not recommended for large areas in the foundation due to the difficulty in shaping this fabric. Excellent for smaller areas in the foundation.

**Welded Mono:** PMesh-XL Very popular Foundation. Made from clear nylon threads woven like a window screen. Sonic welded to join the threads permanently together. Made in a single or double layer. Extremely natural.

**Fine Welded Mono:** Same as welded mono but made from finer nylon thread in smaller holes.

**Sonic Welded:** Thread to Pattern. Made single or double layered. Also referred to as the All-Star Welded Mono Lace.

**PU and Glass Silk:** Clear Polyurethane reinforced with very thin gauze material. Very durable natural appearing see through material. The scalp is seen through this material.

**PU Thin Skin:** Clear Polyurethane with no gauze. Beautiful but short lived. A very popular foundation.

**PE Mesh:** Nylite Mesh, PE Mesh, Poly Mesh. Flexible and durable four-sided Polyester Mesh similar to Window Screen but with smaller holes. May be ordered with a soft or firm finish.

**Small Hole Fusion:** FMesh. Woven material with six-sided pencil size  $\frac{1}{4}$ " holes.

**Large Hole Fusion:** Woven material same as small hole Fusion Material but with  $\frac{1}{2}$  " holes.

**Integration Material:** Braided Nylon sewing thread used to construct a foundation with any size holes desired.

# Illusion Front Materials:

**Welded Mono Lace:** Same as Welded Mono using finer more closely woven threads. Used for Welded Mono fronts and total Foundations. Also known as: EZ On Material, Viper Front Material, and Al Star Front Material.

**French Lace:** Theatrical Lace used to create a very natural front hairline. May be used for the entire foundation.

**Skin Lace:** Very thin PU plus Gauze material. Natural looking but very delicate. May be used for the entire foundation.

# Ventilation Options:

**Single Hair Vent:** 1 hair is vented at a time. For gentle daily wear customers who want the open look. Very natural. This is the most convincing but also the most delicate venting. Not recommended for hard usage. May also be ordered in specific areas only. Front, Part, Crown, or as desired.

**V Loop Stitch:** Extremely natural. No knots at all. Must be Polyurethane sealed. No durability.

**Half Knot:** Used in Polyurethane areas. Is also sealed after venting. As durable as single hair venting and is next to loop stitch for the finished appearance.

**Standard Venting:** 1 to 2 hairs at a time. Good looking and durable. The knots are more noticeable if styled strongly open. This is the recommended knotting for longer lasting results on the permanent wear clients. May also be ordered in specific areas only. Top, Sides, Back, or as desired.

SUNCREST II & RALPH

WWW.SUNCRESTII.COM

APRIL 2023

# How To Make A Template

- Place an 18-inch square of clear plastic wrap so that it covers the top portion of the head.
- After pressing the wrap close to the head, use tape to contour the head shape.
- Beginning at the forehead, place transparent tape on the wrap over what will become the outer perimeters of the pattern.



- The areas of baldness determine these outer perimeters.
- After you have taped the boundaries, cover the inner portion of the plastic wrap with overlapping pieces of tape.
- Apply at least 3 layers of tape.
- The tape will lock the plastic wrap into a permanent transparent tape template.



SUNCREST II & RALPH

[WWW.SUNCRESTII.COM](http://WWW.SUNCRESTII.COM)

APRIL 2023

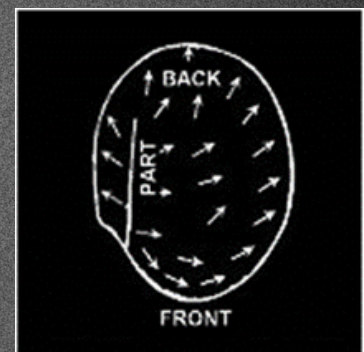
# Hairpiece Pattern

Using a Sharpie permanent marker, draw pattern lines on the tape template while it is still on your head. Though requirements vary from person to person, some rules of thumb apply to most. Front hairline should usually be established by placing 3 or 4 of your fingers (depending on your age) about the brow line. Lines are drawn from that point to form a pattern, which covers the bald area. Deeper recessions look most natural.

- After the entire outer perimeter of the pattern is drawn, the desired style should be indicated.
- If a part is desired, draw a line from a pivot point at the back crown to the front hairline. Placement of the pivot point should correspond to what can be seen of your original growth.



Indicate the probable growth pattern on the tape template, the date the tape template is made, as well as other pertinent information concerning your hairpiece. After you have finished marking the tape template, add one more layer of tape (now 4) to cover and seal in the markings. Since the average life of a hairpiece is 12 to 18 months, good record keeping is advisable to keep the hair piece current. Remove the tape template from your head and trim the excess plastic wrap off. Don't forget to put the information of the order (e.g., order #, order ref, etc). Please label front and back.



SUNCREST II & RALPH

WWW.SUNCRESTII.COM

APRIL 2023

# Custom Made Wigs

## **For Custom Made Hair Replacement & Wigs:**

Standard/ Custom for unit size up to unit size up to 8" x 11" or 88sq. inches. 4" - 5" hair length

## **Standard/ Custom Full Wigs:**

(Foundation for approval: Only a Plaster cast or firm pattern can be accepted)

Partial unit up to 3" x 3" or 9 sq. inches Regular Foundation Caps Only  
Wig or Oversize Foundation Caps Only

## **Additional Charge Will Be Added:**

For oversize to 100 Sq. inches French Lace Foundation  
All double layer foundation  
French Lace Front Order on Original Unit  
Mono Lace Front Order on Original Unit

## **Additional Charges for The Following:**

Yak Gray Hair 4" - 5" standard length only  
Human Gray Hair 4" - 5" standard length only Human Hair 6 to 7"  
Human Hair 8 to 9"  
Human Hair 10 to 12"  
Human Hair 13 to 15"  
Human Hair 16 to 18"

Charges double for full wigs, oversized units and extra heavy density.

## **Regular Re-vents:**

Full Wig/ Oversized Unit Re-vents (Human Hair Only)

Sew on Comb Clips (per clip basis)

## **Repairs:**

Minor/ Standard Repair

## **Additional charges for the following:**

Full Wig | Oversize  
Repair & Replace PU Front or New PU All Around  
Repair & Replace Lace Front  
Replace Lace Front (Supplied)



# Repair of Foundation Material

**THE UNIT MUST BE WASHED, CLEANED, AND FREE OF SOFT GLUE BEFORE SENDING.**

**\*Additional Charge when cleaning is necessary\***

**Delivery is Approximately 3-4 Months**

**No Rush Delivery Options are Available at the moment**

**SUNCREST II & RALPH**

[WWW.SUNCRESTII.COM](http://WWW.SUNCRESTII.COM)

APRIL 2023

# Terms & Conditions

## **Terms:**

A 50% deposit is required with every custom order. C.O.D. for the balance is customary. If you would like to save your C.O.D. charges, you may prepay the total order. Please call for the current shipping prices charged by U.P.S., The USPS and other carriers prior to sending. Major credit and debit cards are gladly accepted for payment.

## **Return Policy Stock Hair Replacements:**

Any Stock Hair Replacement Returned for credit or exchange must be in its original condition and immediately returnable to inventory within 60 days. Additional postage will be charged for exchanges. Please call (and enclose payment) for the current postage charges before returning. There is a \$10.00 restocking fee.

## **Custom Hair Replacements:**

We inspect each unit before leaving this office. We would also appreciate your careful inspection of the finished product. Please do this before pre-cutting: First wash the unit then check the color of the samples, density, pattern, size, and fit. If you find anything that does not meet your specifications return it immediately to us. If it needs correction, it will be done promptly. If the unit needs to be remade, which could sometimes happen, we would like to have the unit uncut for use in our own studios or as a sample unit. If a fault is found during delivery do not hesitate to send it back for correction. \*Before sending units please make sure to wash them thoroughly for the best results. \*

## **Hair:**

### **Pre-Wavy Human Hair:**

Most pre-waving is done using heat and pressure; therefore, curls vary especially in lighter shades. All curl patterns are available.

SUNCREST II & RALPH

[WWW.SUNCRESTII.COM](http://WWW.SUNCRESTII.COM)

APRIL 2023

# Terms & Conditions

## **Synthetic Fiber:**

Kanekalon Modacrylic Fiber is exclusively used. All curl patterns are available. Used for Gray blends in Human Hair Units unless otherwise requested. White Human or Yak Hair is also available at an additional charge up to 5"

## **Ordering:**

When sending Custom Orders, please send an extra-large hair sample (sample unit depending on condition) for the best color matching. We accept Templates, Foam Molds, and Plaster Casts. You may use any order form or call for forms. Please put your Name, Area Code, and Telephone number as well as an alternate number on your order form. We may need to call you for further instructions. Please review your order form carefully before sending. Missing information will cause a delay of your order. You will receive an order confirmation with an Invoice number printed on it. Please use that Invoice Number whenever you call for information. Using that Invoice Number will enable us to give you an immediate answer to any question.

## **Using a Color Ring:**

When Using a Color Ring for your Hair Color on a Custom unit, please indicate which ring you are using and whether it's Human or Synthetic. If it is a three tone Color Ring, please indicate which color or colors you have chosen for the Front, Top, or Back.

## **Stock Units Using a Color Ring:**

When using a color Ring to order Stock Units. Please indicate which ring you are using and whether it's Human or Synthetic. You may also send color samples when ordering a stock unit. All our stock units are tone on tone and are hand matched to the sample or Color Ring specified.

## **Gray %:**

The gray % area on the order forms is usually for Total Gray. Samples are the best way to get the correct color. If you use a Color Ring for your %of Gray, please indicate which Ring you are using and whether it's Human or Synthetic. If it is a three tone Color Ring, please indicate which color or colors you have chosen for the Front, Top, or Back.

**SUNCREST II & RALPH**

[WWW.SUNCRESTII.COM](http://WWW.SUNCRESTII.COM)

APRIL 2023

SUNCREST II & RALPH<sup>®</sup>

Manufacturer of Hairpieces & Wigs

5201 RAVENSWOOD RD #121  
FORT LAUDERDALE, FL 33312